



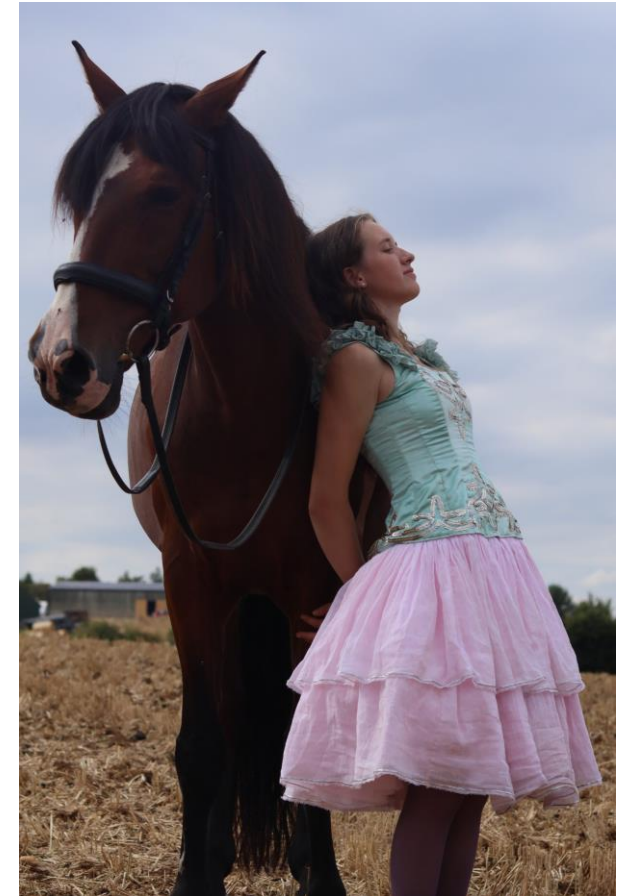
<https://emmacrosslandcostume.wixsite.com/portfolio>



emmacrossland\_costumier



emma-crossland-costumier



## 1890s EQUESTRIENNE COSTUME

- A replica of an 1890s bodice worn by equestrienne Rose Dockrill, held in the archives of the Circus World Museum, Wisconsin, and an equestrienne tutu based on an 1897 lithograph of Rose Dockrill. Paired with replicas of circus shoes, based upon a pair from the Tegge Circus Archives.



## DICK WHITTINGTON (ADULT PANTO)

- Two sets of four sailor costumes for dancers in an adult version of Dick Whittington commissioned by Norwich Maddermarket Theatre
- Costume Maker
- Designs by Jack Sheehan



## DICK WHITTINGTON AND HIS CAT – CBEEBIES PANTOMIME

- Two chunky knitted vests commissioned by Fabrication Studios, Liverpool for the 2022 CBeebies Christmas Pantomime
- Costume Knitter
- Designs by Mary Lamb



## EMMA BY EMMA WOODHOUSE

- 'Jane Fairfax' costume commissioned by Menstrual Rage Theatre Company
- Costume Designer and Maker



## ANNA PAVLOVA TUTU

- Replica costume commissioned for exhibition at Darlington Hippodrome Theatre
- An interpretive reconstruction of the iconic Rondino costume worn by ballerina Anna Pavlova in the 1920s. The wig and feather fan were made to compliment the costume.



## DICK WHITTINGTON

- Costume Workroom Assistant for Chipping Norton's 2022 pantomime Dick Whittington
- Designs by Maryna Gradnova



## GATSBY ON THE ORIENT EXPRESS

- 1920s chiffon 'Little Black Dress' over slip and faux fur trimmed evening cape, inspired by extant garments from the Met Museum and Fashion Institute of Technology Museum.



## THE TASK

- A collection of sea creature costumes for LIPA Productions
- Costume Maker, Milliner and Embellisher
- Designs by Ian Kirk and Kirsty Brien



## ROMEO & JULIET

- Mantua style gown, underpinnings, headdress and accessories made for the title character Juliet.
- Costume Maker and Milliner
- Designs by Anne Curry in collaboration with Lara Booth.



## LORD OF THE DANCE

- Irish dance costumes designed and made for the characters Saoirse and Morrigan. Morrigan wears a dress made from red sequined fabric over a leotard, with metallic spandex cross details at the sides. Saoirse's costume is a delicate sequined lace dress (also with built in leotard) with machine embroidered 3D flowers onto Angelina to decorate the neckline.



## ANASTASIA AMERICAN SMOOTH DRESS

- A Viennese Waltz American smooth dress designed for the brief of Strictly Come Dancing: Musicals Week and themed to the musical Anastasia. Embellished with gold appliqués, a goldwork sash and marabou trimming, this stretch velvet dance dress reflects traditional Russian Court Dress.



## BARNUM CHARLESTON COSTUME

- A Charleston dance costume based on the musical Barnum and made to the brief of Strictly Come Dancing: Musicals Week. Inspired by Victorian circus costume, this costume mimics a corset and features a chemise-inspired top and a ruched skirt. Gold beading and other gold accents embellish the costume.



## LEGALLY BLONDE LATIN COSTUME

- Latin dance costume, designed for Paulette from the musical Legally Blonde, was made to the brief Strictly Come Dancing: Musicals Week, with the cha cha cha dance in mind. The print on the fabrics was digitally designed to reflect the quirkiness of Paulette's nature, linking to her personality traits. Beaded fringe, metallic topstitching and rhinestones give that 'Strictly Sparkle' that the TV show is known for.



## 1860s/ CIVIL WAR ERA UNDERGARMENTS –

- 1860s/ Civil War era silk corset and chemise with hand-worked scalloped neck edge finish



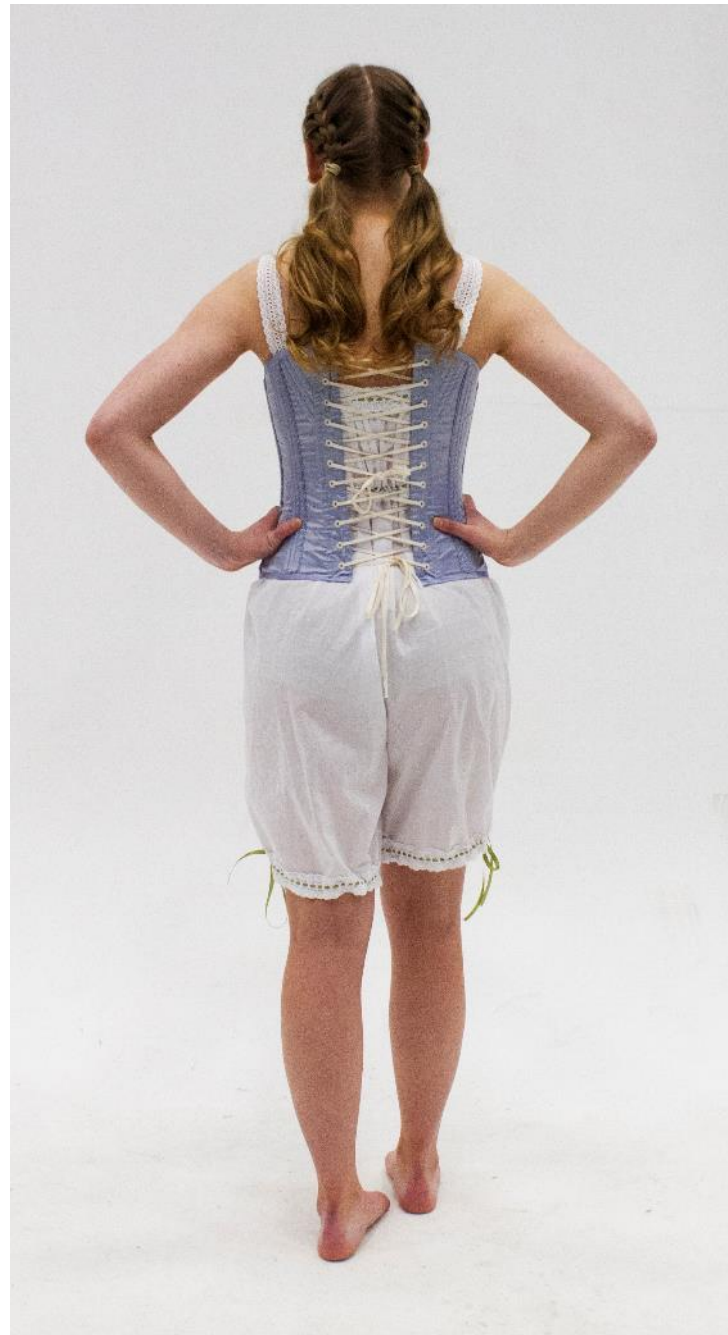
## REGENCY SHORT STAYS

- A pair of regency short stays, almost entirely hand sewn and including hand worked eyelets. The back is corded for support and for ease of self-lacing, the back is cross laced instead of the historically accurate spiral method



## THEATRE-STYLE TUDOR STAYS

- A pair of machine-stitched Tudor stays, made in a theatre style as opposed to historically accurately. Worn with a Tudor bumroll.



## 1890s UNDERGARMENTS

- 1890s - style silk corset and cotton combinations, trimmed with ribbon-threaded cotton lace.



## 1860s CORSET AND CRINOLINE

- 1890s - style faux silk corset, flossed and trimmed with cotton lace, and a tame 1860s crinoline.



## 1903 CARTWHEEL HAT

- Silk velvet covered buckram hat, trimmed with ostrich plumes and handmade silk velvet roses.
- Representing the millinery fashions of winter, 1903



## HATS FROM BACK TO THE FUTURE – HAT I

- Hat inspired by the one worn by Clara Clayton in the third Back to the Future movie. Blocked from sinamay, trimmed with manipulated ribbons, dyed and trimmed goose feathers and a silk dupion sash, pleated into an antique buckle.



## HATS FROM BACK TO THE FUTURE – HAT II

- A second hat inspired by Clara Clayton's final hat in Back to the Future III. Made from satin-covered buckram, trimmed with stiffened ostrich feather mounts and digitally printed sashes.



## HATS FROM BACK TO THE FUTURE – HAT III

- Felt Stetson-style cowboy hat inspired by the hat worn by Marty McFly in Back to the Future III. Trimmed with leather cord.



## HATS FROM BACK TO THE FUTURE – HAT IV

- 'Futuristic' baseball cap inspired by the one worn by Marty McFly in the second movie. Made from colour-changing lenticular material.



## HATS FROM BACK TO THE FUTURE – HAT V

- 1950s-style felt fedora, inspired by Marty McFly's 'Something Inconspicuous' scene in Back to the Future. Trimmed with a satin ribbon hat band.



## INTO THE WOODS WOLF JACKET

- Fully machine embroidered wool tailored jacket, made for the character of the Big Bad Wolf from the musical Into the Woods.
- Accessorized with a black felt trilby, also blocked and made by me.



## WOMEN'S TAILORED JACKET

- Classic - fit wool and wool blend tailored jacket, made in the custom tailoring method. Features two double jet pockets with flaps, statement notched collar and single back vent.



# EMBELLISHED INDIAN DUPATTA

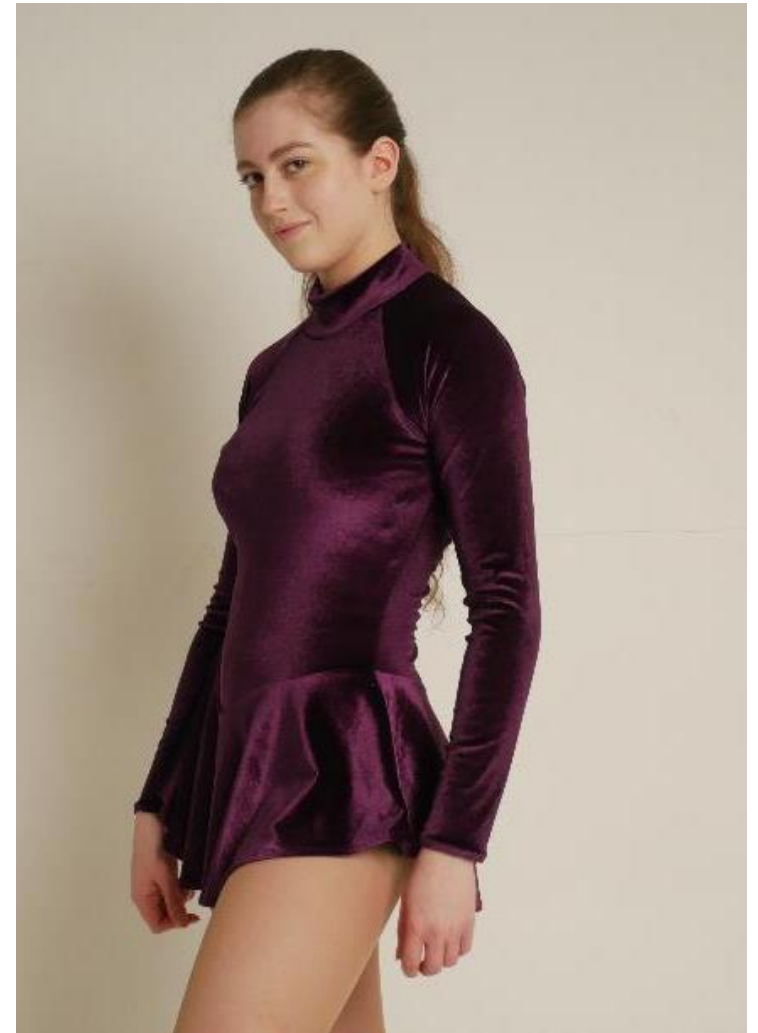
- Indian dupatta embellished with peacock motifs worked in tambour embroidery with gold thread, beadwork and sequins.





## CAPSULE COLLECTION

- A capsule collection based on the 2017 'Western' fashion trend, approached with a modern interpretation, mixing popular style staples with subtle hints of the trend. The final collection included a digitally printed shirt, a pair of stretch skinny jeans and a white leather biker jacket with leather fringing across the back and sleeves.



## VELVET FIGURE SKATING COSTUME

- Figure skating leotard made from stretch velvet, featuring full length raglan sleeves.